

Online Supplement 1
to
William Moorcroft, Potter. Individuality by Design

Image Portfolio of the work of contemporary potters and ceramic designers

This selection is by no means exhaustive, but is intended to illustrate the work of ceramic artists, studio potters and commercial designers active during Moorcroft's career, and to enable a more informed view of his individuality.

Many illustrations are freely available on Wikimedia Commons. I am particularly grateful, though, to the following specialists who have willingly given permission for images to be reproduced from their websites:

Alison Davey, AD Antiques, www.adantiques.com

Andrew Muir, Andrew Muir Decorative Arts and Design, www.andrew-muir.com

Michael Jeffery, Associate Director, Woolley & Wallis, www.woolleyandwallis.co.uk

Images follow the sequence of chapters in the book.

00 Introduction

- 01 Frank Butler for Doulton Lambeth, Vase with stylised floral decoration, 1879.
- 02 Christopher Dresser for Linthorpe Pottery, Pitcher with polychrome glaze, c.1880.
- 03 Cassandra Walker for Della Robbia, Vase presented to Mayor of Birkenhead, 1898.
- 04 William de Morgan, Jar with dolphin decoration in a Persian palette, c.1890.
- 05 William Howson Taylor, Vase with mottled blue and purple glaze, dated 1906.
- 06 M.L.E. Solon for Minton, Vase with *pâte-sur-pâte* decoration, 1880.
- 07 Hannah Barlow for Doulton Lambeth, Vase with incised decoration of grazing deer, 1874.

01 1897-1900

- 01 Thomas Moorcroft for E.J.D. Bodley, Cup and Saucer, c.1875.
- 02 Wildig for J. Macintyre & Co. Ltd., Stilton dish and cover in Washington Faience, 1895.
- 03 Harry Barnard for J. Macintyre & Co. Ltd., Teapot and Jug in Gesso Faience, c.1896.
- 04 M.L.E. Solon for Minton, Vase with figure of Cupid in *pâte-sur-pâte*, 1895.
- 05 Brown-Westhead, Moore & Co., Vase with polychrome decoration, c.1875.
- 06 George Jones & Sons, Vase with raised decoration in majolica glazes, c.1880.
- 07 Minton, Vase with applied polychrome decoration of pomegranates, 1878.
- 08 William Brownfield & Sons, Vase with raised decoration in polychrome glazes, c.1870.
- 09 John Fogo and E.LI for Della Robbia, Vase with stylised leaf and flower design, c.1902.

02 1901-1904

- 01 Owen Carter for Carter & Co., Vase with streaked green lustre glaze, dated 1903.
- 02 Edmund Elton, Vase with crackled gold glaze, c.1904.
- 03 Leon Solon & John Wadsworth for Minton, Vase in Secessionist ware, c.1904.

03 1905-1909

- 01 William de Morgan, Vase with cover, decorated in ruby lustre, c.1890.
- 02 John Adams for Bernard Moore, Red flambé vase with floral decoration, c.1909.
- 03 William Howson Taylor, Vase with green and mauve mottled glaze, c.1905.

- 04 William Burton for Pilkington, Vase with streaked orange crystalline glaze, dated 1908.
- 05 Gordon Forsyth for Pilkington, Lustre vase decorated with rampant lions, dated 1908.

04 1910-1912

- 01 Bernard Moore, Vase with flambé glaze and decoration in enamels and gilding, c.1910.
- 02 William Howson Taylor, Vase with speckled green, lavender and pink glaze, dated 1911.
- 03 Reginald Wells, Vase with blue glaze streaked with lavender and turquoise, c.1911.
- 04 George Cox, Mortlake Pottery vase with mottled white and pink glaze, dated 1912.

06 1913-1914

- 01 Roger Fry for Omega Workshops, Vase with rectilinear decoration on a tin glaze, c.1914.

07 1914-1918

- 01 Charlotte Rhead for H.J. Wood Ltd., Bursley Ware vase with Seed Poppy design, c.1919.
- 02 George Cartlidge for S. Hancock & Sons, Morris Ware vase with clover design, c.1918.

08 1919-1923

- 01 William Staite Murray, Vase with Chun glaze in silver and purple, dated 1923.
- 02 William Mycock for Pilkington, Lustre vase with leaf design in silver on blue, 1923.
- 03 Daisy Makeig Jones for Wedgwood, Fairyland lustre vase in the Pillar design, c.1920.
- 04 Shoji Hamada, Combed tea bowl, c.1923.

09 1924-1925

- 01 Ashtead Pottery, Vase with Sailing Ship design, c.1925.
- 02 William Mycock for Pilkington, Lustre vase with stylised floral decoration, 1925.
- 03 Susie Cooper for Gray & Co., Gloria Lustre vase in pink, purple and blue, 1925.
- 04 William Staite Murray, Vase with thick blue glaze, dated 1924.

10 1926-1928

- 01 Clarice Cliff for Newport Pottery, Vase with geometric design in Bizarre series, 1928.
- 02 Shelley China, Vase with apple design, 1927.
- 03 Alfred Powell for Wedgwood, Lustre vase with decoration of stags, c.1925.
- 04 William Staite Murray, 'Geese by the Reeds', exhibited at the Paterson Gallery, 1928.
- 05 Susie Cooper for Gray & Co., Vase in Cubist design, 1928.

11 1929-1931

- 01 William Staite Murray, 'Persian Bird', exhibited at the Lefevre Galleries, 1931.
- 02 Frank Brangwyn for Doulton Lambeth, Pitcher with fruit and leaf decoration, c.1930.
- 03 Wilhelm Kåge for Gustavsberg, Pitcher and bowl in Pyro range, 1930.
- 04 Clarice Cliff for Newport Pottery, Conical cup and saucer in Blue Autumn design, 1931.
- 05 Truda Carter for Poole Pottery, Vase with Leaping Stag design, c.1930.
- 06 Bernard Leach, Vase with Leaping Salmon decoration, c.1931.

12 1932-1935

- 01 Clarice Cliff for Newport Pottery, Coffee Pot in Eton shape with Circle Tree design, c.1933.
- 02 Susie Cooper, Coffee set in Kestrel shape with Dresden Spray design, c.1935.
- 03 Laura Knight for Newport Pottery, Plate with Circus design, 1934.
- 04 Clarice Cliff for Newport Pottery, Vase in Sunray design, c.1930.
- 05 Eric Slater for Shelley China, Cup and Saucer in Vogue shape with Sunray design, 1930.

- 06 William Staite Murray, Footed bowl with brushed decoration, c.1933.
- 07 Keith Murray for Wedgwood, Ribbed vase in matt blue glaze, c.1934.
- 08 Bernard Leach, Jug of medieval form with incised leaf motif under an ash glaze, c.1935.
- 09 Michael Cardew, Flagon with brushed decoration in tan and brown, c.1935.
- 10 Katharine Pleydell-Bouverie, Footed bowl with cedar ash glaze, dated 1931.
- 11 William Howson Taylor, Vase with graduated crystalline glaze, 1933.

13 1936-1939

- 01 Vase with *sang de boeuf* glaze, Qing dynasty (1662-1722).

14 1939-1945

- 01 David & John Philip Elers, Unglazed red earthenware mug with applied decoration, c.1695.

00 01 Frank Butler for Doulton Lambeth, Vase with stylised floral decoration, 1879, The Met Fifth Avenue.

https://www.metmuseum.org/art/collection/search/239506?when=A.D.+1800-1900&where=United+Kingdom&what=Pottery&showOnly=openAccess&ft=*amp;offset=360&rpp=40&pos=374. CC0 1.0.



00 02 Christopher Dresser for Linthorpe Pottery, Pitcher with polychrome glaze, c.1880, The Met Fifth Avenue.

[https://commons.wikimedia.org/wiki/File:Pitcher_MET_DP-13486-029_\(cropped\).jpg](https://commons.wikimedia.org/wiki/File:Pitcher_MET_DP-13486-029_(cropped).jpg). CC0 1.0.



00 05 William Howson Taylor, Vase with mottled blue and purple glaze, dated 1906, Auckland Museum.

[https://www.aucklandmuseum.com/collections-](https://www.aucklandmuseum.com/collections-research/collections/record/am_humanhistory-object-16384?k=howson&ordinal=4)

[research/collections/record/am_humanhistory-object-16384?k=howson&ordinal=4](https://www.aucklandmuseum.com/collections-research/collections/record/am_humanhistory-object-16384?k=howson&ordinal=4)

[https://commons.wikimedia.org/wiki/File:Vase_\(AM_16384-1\).jpg](https://commons.wikimedia.org/wiki/File:Vase_(AM_16384-1).jpg). CC BY 4.0.



00 06 M.L.E. Solon for Minton, Vase with *pâte-sur-pâte* decoration, 1880, Mount Holyoke College Art Museum.

[https://commons.wikimedia.org/wiki/File:Pair_of_Vases,_view_1,_Marc-Louis-](https://commons.wikimedia.org/wiki/File:Pair_of_Vases,_view_1,_Marc-Louis-Emmanuel_Solon,_Minton_factory,_England,_1880,_porcelain,_polychromy,_gilding,_bronze_bases_-_Mount_Holyoke_College_Art_Museum_-_DSC04599.JPG)

[Emmanuel_Solon,_Minton_factory,_England,_1880,_porcelain,_polychromy,_gilding,_bronze_bases_-_Mount_Holyoke_College_Art_Museum_-_DSC04599.JPG](https://commons.wikimedia.org/wiki/File:Pair_of_Vases,_view_1,_Marc-Louis-Emmanuel_Solon,_Minton_factory,_England,_1880,_porcelain,_polychromy,_gilding,_bronze_bases_-_Mount_Holyoke_College_Art_Museum_-_DSC04599.JPG). Daderot, CC0 1.0.



00 07 Hannah Barlow for Doulton Lambeth, Vase with incised decoration of grazing deer, 1874, V&A Museum.

<https://commons.wikimedia.org/wiki/File:Doulton.jpg>. VAwebteam at English Wikipedia, CC BY-SA 3.0.



01 01 Thomas Moorcroft for E.J.D. Bodley, Cup and Saucer, c.1875. CC BY-NC.



01 02 Wildig for J. Macintyre & Co. Ltd., Stilton dish and cover with applied decoration in Washington Faience, 1895.

<https://www.woolleyandwallis.co.uk/departments/20th-century-design/da121218/view-lot/120/>. [Reproduced with kind permission from Woolley & Wallis]. CC BY-NC.



01 03 Harry Barnard for J. Macintyre & Co. Ltd., Teapot and Water Jug in Gesso Faience, c.1896.

<https://www.woolleyandwallis.co.uk/departments/20th-century-design/da200319/view-lot/324/>. [Reproduced with kind permission from Woolley & Wallis]. CC BY-NC.



01 04 M.L.E. Solon for Minton, Vase with figure of Cupid in *pâte-sur-pâte*, 1895, The Met Fifth Avenue.

https://www.metmuseum.org/art/collection/search/838105?when=A.D.+1800-1900&where=United+Kingdom&what=Pottery&showOnly=openAccess&ft=*&offset=240&rpp=40&pos=260. CC0 1.0



01 05 Brown-Westhead, Moore & Co., Vase with polychrome decoration of birds and flowers, c.1875.

https://commons.wikimedia.org/wiki/File:Brown_Westhead_Moore_Vase,_coloured_glazes,_c.1875.jpg. Davidmadelena, CC BY-SA 4.0.



01 06 George Jones & Sons, Vase with raised frog and insect decoration in majolica glazes, c.1880.

https://commons.wikimedia.org/wiki/File:George_Jones_c._1880_frog_and_insect_vase.jpg
Davidmadelena, CC BY-SA 4.0.



01 07 Minton, Vase with applied polychrome decoration of pomegranates and foliage, 1878.

https://commons.wikimedia.org/wiki/File:Mintons_Pomegranite_Vase,_1878,_22_ins.,_coloured_glazes,_boldly_decorative,_naturalistic_and_humorous_in_style.jpg. Davidmadelena, CC BY-SA 4.0.



01 08 William Brownfield & Sons, Vase with raised decoration in polychrome glazes, c.1870.

https://commons.wikimedia.org/wiki/File:Brownfield_coloured_glazes_majolica_vase_c_1870.jpg. Davidmadelena, CC BY-SA 4.0.



01 09 John Fogo and E.LI for Della Robbia, Vase with stylised leaf and flower design, c.1902.

<https://www.adantiques.com/objects/p/della-robbya-vase-3>. [Reproduced with kind permission from AD Antiques]. CC BY-NC.



02 01 Owen Carter for Carter & Co., Vase with streaked green lustre glaze, dated 1903.
<https://www.woolleyandwallis.co.uk/departments/20th-century-design/da160322/view-lot/53/>. [Reproduced with kind permission from Woolley & Wallis]. CC BY-NC.



02 02 Edmund Elton, Vase with crackled gold glaze, c.1904.
https://commons.wikimedia.org/wiki/File:Edmund_Elton00.jpg.



02 03 Leon Solon & John Wadsworth for Minton, Secessionist vase with stylised floral decoration, c.1904.

<https://www.woolleyandwallis.co.uk/departments/20th-century-design/da251115/view-lot/228/>. [Reproduced with kind permission from Woolley & Wallis]. CC BY-NC.



03 01 William de Morgan, Vase with cover, decorated with stylised mythical creatures in ruby lustre, c.1890, The Met Fifth Avenue.

https://commons.wikimedia.org/wiki/File:Vase_with_cover_MET_ES4176.jpg. CC0 1.0.



03 02 John Adams for Bernard Moore, Red flambé vase with stylised floral decoration, c.1909.

<https://www.woolleyandwallis.co.uk/departments/20th-century-design/da200612/view-lot/169/>. [Reproduced with kind permission from Woolley & Wallis]. CC BY-NC.



03 03 William Howson Taylor, Vase with green and mauve mottled glaze, c.1905.

https://commons.wikimedia.org/wiki/File:BLW_Stoneware_vase,.jpg Valerie McGlinchey, CC BY-SA 2.0.



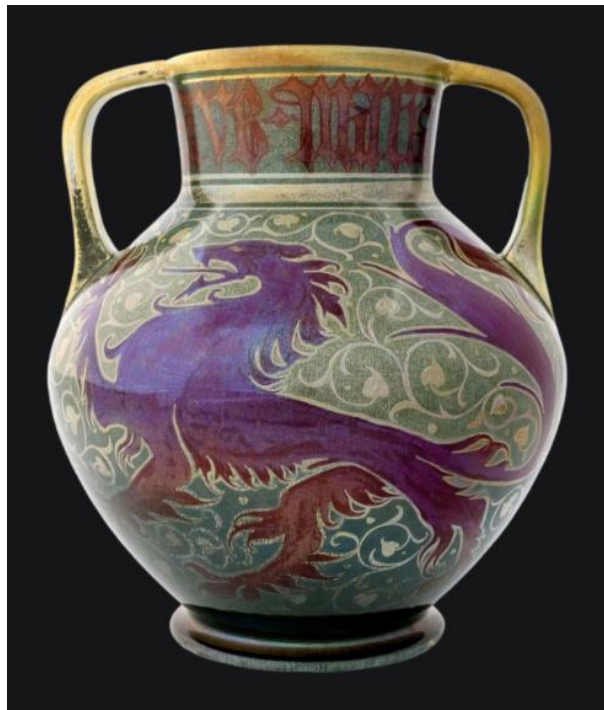
03 04 William Burton for Pilkington, Royal Lancastrian vase with streaked orange crystalline glaze, dated 1908.

<https://www.woolleyandwallis.co.uk/departments/20th-century-design/pg200906/view-lot/865/>. [Reproduced with kind permission from Woolley & Wallis]. CC BY-NC.



03 05 Gordon Forsyth for Pilkington, Royal Lancastrian lustre vase decorated with rampant lions, dated 1908.

<https://www.adantiques.com/objects/p/jwe6b4ks73tbp94sktyhhtt54gscht>. [Reproduced with kind permission from AD Antiques]. CC BY-NC.



04 01 Bernard Moore, Vase with flambé glaze and decoration in enamels and gilding, c.1910, Fitzwilliam Museum, Cambridge.

https://commons.wikimedia.org/wiki/File:Bernard_Moore_Sol-fleur_Vase.JPG. Geni, CC BY-SA 4.0.



04 02 William Howson Taylor, Vase with speckled green, lavender and pink glaze, dated 1911, The Met Fifth Avenue.

https://commons.wikimedia.org/wiki/File:Vase_MET_Ellison.2013.19.jpg. CC0 1.0.



04 03 Reginald Wells, Coldrum Pottery vase with blue glaze streaked with lavender and turquoise, c.1911.

<https://www.woolleyandwallis.co.uk/departments/20th-century-design/da161220/view-lot/137/>. [Reproduced with kind permission from Woolley & Wallis]. CC BY-NC.



04 04 George Cox, Mortlake Pottery vase with mottled white and pink glaze, dated 1912.

<https://www.woolleyandwallis.co.uk/departments/20th-century-design/da200618/view-lot/62/>. [Reproduced with kind permission from Woolley & Wallis]. CC BY-NC.



06 01 Roger Fry for Omega Workshops, Vase with rectilinear decoration in blue, red and fawn on a tin glaze, c.1914.

<https://www.woolleyandwallis.co.uk/departments/20th-century-design/da170322/view-lot/539/>. [Reproduced with kind permission from Woolley & Wallis]. CC BY-NC.



07 01 Charlotte Rhead for H.J. Wood Ltd., Bursley Ware vase with Seed Poppy design in pink, purple, blue and green, c.1919.

<https://www.woolleyandwallis.co.uk/departments/20th-century-design/da250821/view-lot/776/>. [Reproduced with kind permission from Woolley & Wallis]. CC BY-NC.



07 02 George Cartlidge for S. Hancock & Sons, Morris Ware vase with clover design in turquoise, green and purple, c.1918.

<https://www.woolleyandwallis.co.uk/departments/20th-century-design/da210318/view-lot/236/>. [Reproduced with kind permission from Woolley & Wallis]. CC BY-NC.



08 01 William Staite Murray, Vase with Chun glaze in silver and purple, dated 1923.

<https://www.woolleyandwallis.co.uk/departments/20th-century-design/da180320/view-lot/428/>. [Reproduced with kind permission from Woolley & Wallis]. CC BY-NC.



08 02 William Mycock for Pilkington, Lustre vase with leaf design in silver on blue, 1923, Auckland Museum.

[https://commons.wikimedia.org/wiki/File:Vase_\(AM_15878-2\)_\(cropped\).jpg](https://commons.wikimedia.org/wiki/File:Vase_(AM_15878-2)_(cropped).jpg) CC BY 4.0.



08 03 Daisy Makeig Jones for Wedgwood, Fairyland lustre vase in the Pillar design, c.1920.

https://commons.wikimedia.org/wiki/File:Fairyland_Lustre_pillar_vase_1.JPG.

Davidmadelena, CC BY-SA 3.0.



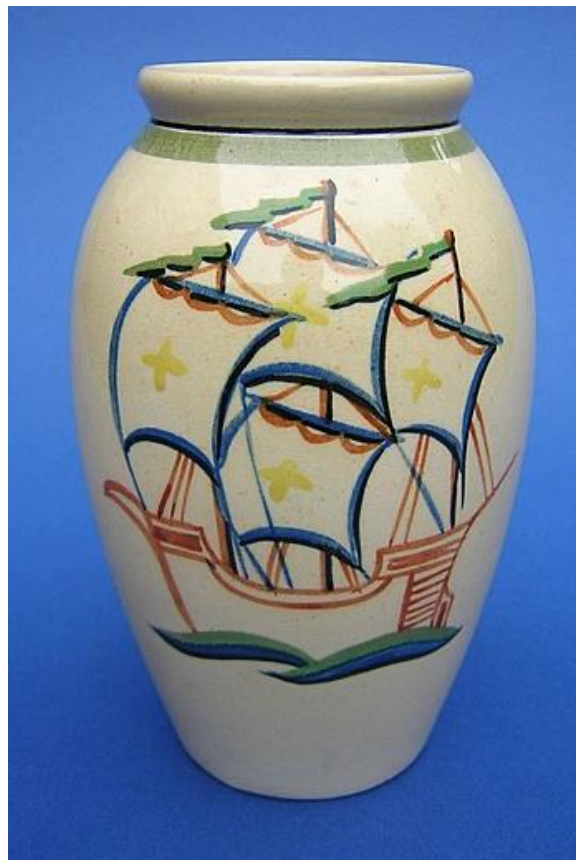
08 04 Shoji Hamada, Combed tea bowl, c.1923, York Art Gallery.

[https://commons.wikimedia.org/wiki/File:Thrown,_Combed_tea_bowl_by_Shoji_Hamada_\(YORYM-2004.1.1957\)_cropped.JPG](https://commons.wikimedia.org/wiki/File:Thrown,_Combed_tea_bowl_by_Shoji_Hamada_(YORYM-2004.1.1957)_cropped.JPG). CC BY-SA 3.0.



09 01 Ashtead Pottery, vase with Sailing Ship design, c.1925.

<https://commons.wikimedia.org/wiki/File:Ashtead7a.JPG>. 20thcenturyglamour, CC BY-SA 4.0.



09 02 William Mycock for Pilkington, Royal Lancastrian vase with fish scale and stylised floral decoration in lustre, 1925.

<https://www.adantiques.com/objects/p/pilkingtons-lustre-vase-6>. [Reproduced with kind permission from AD Antiques]. CC BY-NC.



09 03 Susie Cooper for Gray & Co., Gloria Lustre vase in pink, purple and blue with carnation, 1925.

<https://www.woolleyandwallis.co.uk/departments/20th-century-design/pg261108/view-lot/160/>. [Reproduced with kind permission from Woolley & Wallis]. CC BY-NC.



09 04 William Staite Murray, Vase with thick blue glaze, dated 1924.

<https://www.woolleyandwallis.co.uk/departments/20th-century-design/pg260607/view-lot/12/>. [Reproduced with kind permission from Woolley & Wallis]. CC BY-NC.



10 01 Clarice Cliff for Newport Pottery, Vase with geometric design in Bizarre series, 1928.

<https://andrew-muir.com/items/clarice-cliff-original-bizarre-265-vase-c-1928/3004>.

[Reproduced with kind permission from Andrew Muir Decorative Arts & Design]. CC BY-NC.



10 02 Shelley China, Vase with apple design, 1927.

<https://www.woolleyandwallis.co.uk/departments/20th-century-design/da150415/view-lot/187/>. [Reproduced with kind permission from Woolley & Wallis]. CC BY-NC.



10 03 Alfred Powell for Wedgwood, Vase with decoration of stags between decorative bands, in purple, green and orange lustre, c.1925.

<https://www.woolleyandwallis.co.uk/departments/20th-century-design/da210623/view-lot/160/>. [Reproduced with kind permission from Woolley & Wallis]. CC BY-NC.



10 04 William Staite Murray, 'Geese by the Reeds', Vase decorated with geese among tall grasses, exhibited at the Paterson Gallery, 1928.

<https://www.woolleyandwallis.co.uk/departments/20th-century-design/da180320/view-lot/410/>. [Reproduced with kind permission from Woolley & Wallis]. CC BY-NC.



10 05 Susie Cooper for Gray & Co., Vase in Cubist design, 1928.

<https://andrew-muir.com/items/susie-cooper-large-cubist-vase-c-1930/4272#lg=1&slide=3>. [Reproduced with kind permission from Andrew Muir Decorative Arts & Design]. CC BY-NC.



11 01 William Staite Murray, 'Persian Bird', Vase with Peacock decoration in white slip on oatmeal ground, exhibited at the Lefevre Galleries, 1931.

<https://www.woolleyandwallis.co.uk/departments/20th-century-design/da180320/view-lot/409/>. [Reproduced with kind permission from Woolley & Wallis]. CC BY-NC.



11 02 Frank Brangwyn for Doulton Lambeth, Pitcher with fruit and leaf decoration, c.1930, Brooklyn Museum, NY.

https://commons.wikimedia.org/wiki/File:Pitcher,_Royal_Doulton_%26_Co.,_Lambeth,_England,_designed_by_Frank_Brangwyn,_c._1930,_earthenware_-_Brooklyn_Museum_-_Brooklyn,_NY_-_DSC08348.JPG. Daderot, CC0 1.0.



11 03 Wilhelm Kåge for Gustavsberg, Pitcher and bowl in Pyro range, 1930.

https://commons.wikimedia.org/wiki/File:Pyro_skål_kanna.jpg. Holger.Ellgaard, CC BY-SA 3.0.



11 04 Clarice Cliff for Newport Pottery, Conical cup and saucer in Blue Autumn design, 1931.

<https://andrew-muir.com/items/clarice-cliff-blue-autumn-conical-teacup-saucer-c-1931/790>.

[Reproduced with kind permission from Andrew Muir Decorative Arts & Design]. CC BY-NC.



11 05 Truda Carter for Poole Pottery, Vase with Leaping Stag design, c.1930.

<https://andrew-muir.com/items/poole-pottery-tz-leaping-stag-vase-c-1930/4015>.

[Reproduced with kind permission from Andrew Muir Decorative Arts & Design]. CC BY-NC.



11 06 Bernard Leach, Vase with Leaping Salmon decoration, c.1931.

<https://www.woolleyandwallis.co.uk/departments/20th-century-design/da131217/view-lot/5/> [Reproduced with kind permission from Woolley & Wallis]. CC BY-NC.



12 01 Clarice Cliff for Newport Pottery, Coffee Pot in Eton shape with Circle Tree design, c.1933.

https://commons.wikimedia.org/wiki/File:Melon_shape_14_vase_and_Circle_Tree_Eton_shape_coffee_pot.jpg. Leonard Griffin, Public domain.



12 02 Susie Cooper, Coffee set in Kestrel shape with Dresden Spray design, c.1935.

<https://www.woolleyandwallis.co.uk/departments/20th-century-design/da031012/view-lot/1214/>. [Reproduced with kind permission from Woolley & Wallis]. CC BY-NC.



12 03 Laura Knight for Newport Pottery, Plate with Circus design, 1934.

<https://andrew-muir.com/items/clarice-cliff-laura-knight-circus-7-plate-c-1934/3204>.

[Reproduced with kind permission from Andrew Muir Decorative Arts & Design]. CC BY-NC.



12 04 Clarice Cliff for Newport Pottery, Vase in Sunray design, c.1930.

<https://andrew-muir.com/items/sunray-12-meiping-vase/97#lg=1&slide=0>. [Reproduced with kind permission from Andrew Muir Decorative Arts & Design]. CC BY-NC.



12 05 Eric Slater for Shelley China, Cup and Saucer in Vogue shape with Sunray design, 1930.

<https://andrew-muir.com/items/shelley-sunray-vogue-trio-11742-c-1930/1431>. [Reproduced with kind permission from Andrew Muir Decorative Arts & Design]. CC BY-NC.



12 06 William Staite Murray, Footed bowl with brushed decoration, c.1933, York Art Gallery.

[https://commons.wikimedia.org/wiki/File:Thrown_Bowl_by_William_Staite_Murray_\(YORYM-2004.1.933\).JPG](https://commons.wikimedia.org/wiki/File:Thrown_Bowl_by_William_Staite_Murray_(YORYM-2004.1.933).JPG). CC BY-SA 3.0.



12 07 Keith Murray for Wedgwood, Ribbed vase in matt blue glaze, c.1934, Birmingham Museum of Art.

<https://commons.wikimedia.org/wiki/File:WedgwoodGroup-BMA.jpg>. Sean Pathasema, CC BY 3.0.



12 08 Bernard Leach, Jug of medieval form with incised leaf motif under an ash glaze, c.1935.

<https://www.woolleyandwallis.co.uk/departments/20th-century-design/da031214/view-lot/304/>. [Reproduced with kind permission from Woolley & Wallis]. CC BY-NC.



12 09 Michael Cardew, Flagon with brushed decoration in tan and brown, c.1935.
<https://www.woolleyandwallis.co.uk/departments/20th-century-design/da301116/view-lot/320/>. [Reproduced with kind permission from Woolley & Wallis]. CC BY-NC.



12 10 Katharine Pleydell-Bouverie, Footed bowl with cedar ash glaze, dated 1931.
<https://www.woolleyandwallis.co.uk/departments/20th-century-design/da301111/view-lot/448/> [Reproduced with kind permission from Woolley & Wallis]. CC BY-NC.



12 11 William Howson Taylor, Vase with graduated crystalline glaze, 1933.

<https://www.woolleyandwallis.co.uk/departments/20th-century-design/da200612/view-lot/157/>. [Reproduced with kind permission from Woolley & Wallis]. CC BY-NC.



13 01 Vase with *sang de boeuf* glaze, Qing dynasty (1662-1722), Musée Guimet.

https://commons.wikimedia.org/wiki/File:Red_porcelain_meiping._Kangxi_period._Musée_Guimet._G_1847.JPG. Ismoon, CC BY-SA 4.0.



14 01 David & John Philip Elers, Unglazed red earthenware mug with applied decoration, c.1695, The Met Fifth Avenue.

https://commons.wikimedia.org/wiki/File:Mug_MET_SF2014_712_14_img2.jpg. _CC0 1.0.



